

Riviera

...THE COMPLETE LIFESTYLE

Riviera... a secure, exclusive gated community for the family deserving the complete lifestyle.

The complete lifestyle of Riviera is a mere 10 minutes away from the centre of the city of Montego Bay, ensuring accessibility to work, schools, shopping and places of recreation.



Share the luxurious amenities that come with Riviera's complete lifestyle.

- Two parking spaces for each unit
- Free flowing swimming pool and deck area with an elegant covered gazebo, ideal for those family gatherings
- Play area equipped with swings and other play equipment
- Landscaped areas lushly covered with trees and plants, for those relaxing moments outside the home
- Guardhouse with high-tech intercom system and remote controlled gate for ease of access

2 Bedroom Deluxe



The luxurious two-bedroom deluxe has square footage of 1,774 with the added space on the ground floor accommodating a den or TV room, flowing from the living and dining area. This residence boasts a more expansive living area, resulting from the relocation of the powder room to an area leading off the den/TV room.



FLOOR PLAN



SITE PLAN

Nestled on prime acreage in Bogue Estate, Riviera consists of 30 residential units; 6 one bedroom, 22 two-bedroom and 8 two-bedroom deluxe. The units feature modern architecture with traditional detailed, superior quality finishes. All residential properties are designed to maximize the spectacular views of the ocean and bay, from land rising way above sea level.

The tranquil atmosphere of Riviera will be made even more so by its lush, lavish landscaping, giving you just the privacy you need.

Riviera offers elegantly appointed residences having high ceilings, arched solid wood doors and ceramic tile floors. Each unit has a large covered private balcony.

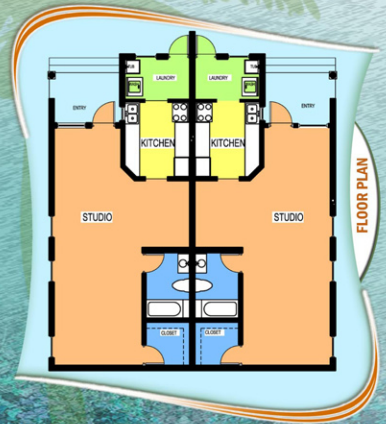
Spacious baths in the two-bedroom and two-bedroom deluxe homes offer double vanities in the master baths, solid wood cabinetry, porcelain tile and granite countertops.

Homes will feature an expansive kitchen and patio area where you can relax, bask in the sunshine and be swept away by the cool balming sea breeze.

1 Bedroom



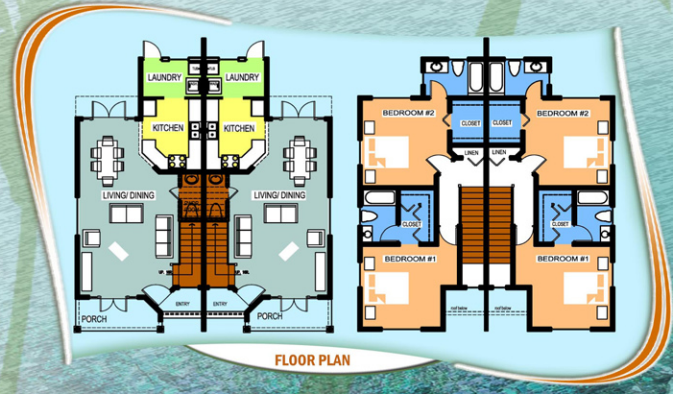
The classy 807 square feet one bedroom unit is laid out as an open concept with the spacious living and dining area flowing into the secluded sleeping area, which can be separated at the request of the buyer.



2 Bedroom



The elegant two-bedroom residence is 1,442 square feet with cathedral ceiling on the first floor, and a ground showcasing the open concept at its best, with the living and dining areas flowing into the kitchen. A laundry room is accessed through the kitchen area and a powder room is located beneath the staircase. The first floor consists of two well-appointed bedroom suites, each with its own bathroom and closet.





DEVELOPER:
**RHESHAN CAPITAL
MANAGEMENT LTD.**

Mailing Address:
Box 30, Little River P.O.
Rose Hall
St. James
Jamaica W.I.

CALL US TODAY OR VISIT OUR SALES OFFICE AT:

31 Gloucester Avenue
Montego Bay, St. James
Telephone: (876) 971-1074
Mobile: (876) 383-9256
Fax: (876) 952-9853

Email: marketing@sealconstruction.net



BOGUE ESTATE
Montego Bay, Jamaica