



The Cooperage Gordon Town Rd.
C/o PO Box 5300, Kingston 6, Jamaica W.I.
Tel: 876-977-2080/2961
Email: fullonproperties@gmail.com



Chatham Palms

1 Palm Dr. Off of Sunset Blvd, Montego Bay St. James

....If you lived here, you would have reached already.

COMMON AMENITIES

Common Area Solar Lights
Children's Play Ground
Guest Parking
Security
Pool
Gym

24# 3 Bedrm 3 Bathrms Town Houses
24# 2 Bedrm, 2 Bthrm Apartments
Exclusivity at an affordable price

Cast Concrete Ext. Walls
Metro-tile Roof Finish
All Units are end units
Drywall interior walls
Protected Aesthetics
Solar Water Heaters
Spacious Kitchen
UPVC Windows
Double Parking
Porcelain Tiles
High Ceilings
Laundry



www.fullonproperties.weebly.com

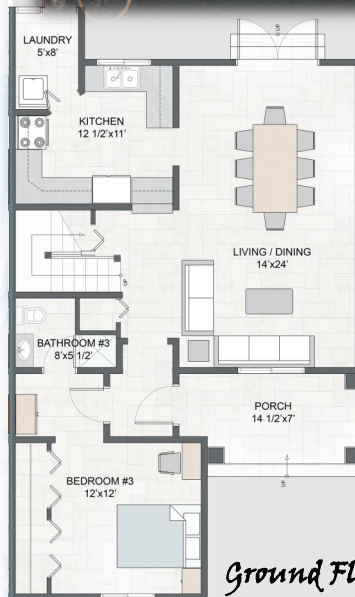
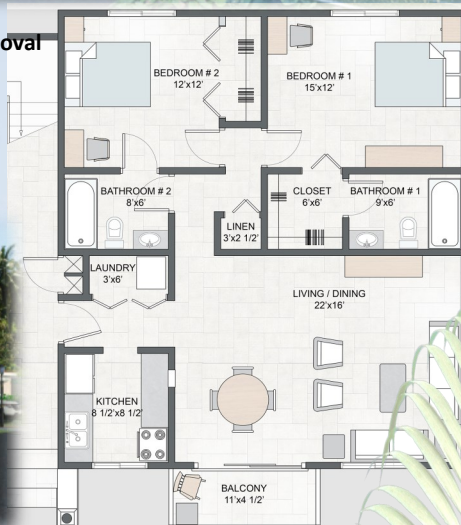
<https://www.facebook.com/Fullonproperties/>

- Selling Price 3 Bed Rm TH JA\$34.0 M
2 Bed Rm Apt JA\$22.0 M
- Deposit 15% on Signing
Balance on Closing
- No escalation other than
increases caused by any new taxes
or levies not in existence at the date of approval

Mortgages Available at

Jamaica National Building Society
up to 95% financing @ 8.5%

Contact Frances Ross 876-733-7049 / 442-0099



Town House 1640 Sqft

Architects
RBA/Robin Baston Associates
Engineer
Hue Lyew & Chin
Quantity Surveyors
Len Smith & Associates
Elec. Mech Eng.
Satyn Consultants
Surveyors:
JR Mais & Associates Ltd
Attorney
John Ross

Subdivision Approved by;

NEPA : Mar 2014

NWA: Aug 2015

St.James PC : July 2015

Bldg Approval :July 2016

REB Approval: Sept 2016

Construction Start:

Nov. 2016

Start Delivery:

Dec 2017

Projected Completion

Jamaica National
Preferred Mortgage Provider
www.jnbs.com