

OCEAN'S EDGE COUNTRY CLUB

DISCOVERY BAY ST. ANN



TIANE SWABY 876-322-2184
tiane@cbjamaica.com



OCEAN'S EDGE AT DISCOVERY BAY

Charming Discovery Bay is one of Jamaica's traditional towns dotting its North Coast. Over the years it has retained its small-town feel. It is within easy reach of the major tourism towns of Montego Bay (66 km/1 hour) and Ocho Rios (34 km/43 min), and Jamaica's capital city, Kingston (104 km/1½ hours), all accessible via the modern North Coast and North/South Highways.

Many of Jamaica's celebrated tourism attractions are in the wider neighbourhood of Discovery Bay. Puerto Seco Beach Park, Dolphin Cove, Green Grotto Caves are within close walking distance. Mystic Mountain and Dunn's River Falls are also about 30 km/30min away.

Nestled amongst the cliffs of Discovery Bay where the Old and New Worlds met, where Christopher Columbus made landfall in Jamaica in 1494 and declared it "the fairest island that eyes have beheld," is a new discovery, The Ocean's Edge Country Club.

OCEAN'S EDGE COUNTRY CLUB

DISCOVERY BAY ST. ANN



Ocean's Edge, perched enticingly on the cliffs overlooking the Caribbean Sea, is an important enhancement to Discovery Bay. A modern development in a historic setting. The beautiful development comprises large townhouses, designed with all the amenities and modern conveniences to make living comfortable and easy.

OCEAN'S EDGE COUNTRY CLUB

DISCOVERY BAY ST. ANN



Property

- 16 Townhouses
- 8,025sqm / 86,380sqft

Amenities

- Clubhouse
- Pool
- Gazebo
- 24hr. Security
- Gated Community

Townhouses

- 205 sqm / 2,206 sqft
- 4 Bedrooms
- 4.5 Bathrooms

OCEAN'S EDGE COUNTRY CLUB

DISCOVERY BAY ST. ANN

TOWNHOUSES

205 SQM / 2,206 SQFT | 4 BEDROOMS | 4.5 BATHROOMS



OCEAN'S EDGE COUNTRY CLUB

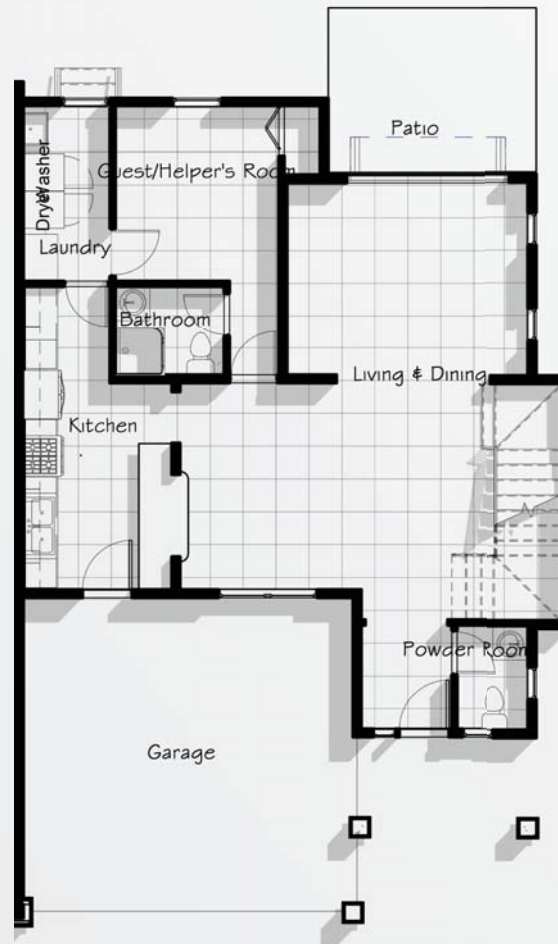
DISCOVERY BAY ST. ANN

TOWNHOUSE

FEATURES

- 2,206 sq.ft.
- 4 Bedrooms – Includes Ground floor Bedroom with ensuite Bathroom
- 4.5 Bathrooms – Includes Powder Room
- In-Unit Laundry
- Water Heater
- Private Backyard Area
- Premium Quality fixtures and fitting
- Covered Parking
- 2 Parking per unit

Prices start at US \$485,000 for each Unit.



GROUND FLOOR PLANS



FIRST FLOOR PLANS

OCEAN'S EDGE COUNTRY CLUB

DISCOVERY BAY ST. ANN

GENERAL FEATURES:

- 16 four-bedroom, 2-storey townhouses, sized 2,200 sq. ft., with high-end finishes and a balcony
- Ocean View
- Gated Community
- A Clubhouse
- An infinity pool overlooking the Caribbean Sea
- 2 cabanas for relaxation or entertainment purposes
- Immaculately landscaped grounds
- 24-hour state of the art security systems
- Double Entry Gate
- Visitors Parking
- Modern and advanced infrastructural support systems in water, sewerage, electricity
- Underground utility installations





CLUB HOUSE





POOL DECK



OCEAN'S EDGE COUNTRY CLUB

DISCOVERY BAY ST. ANN



FROM WATER'S EDGE

DISCOVERY BAY ST. ANN

OCEAN'S EDGE COUNTRY CLUB



LOCATION



SYGNUS



COLDWELL BANKER
JAMAICA REALTY

TIANE SWABY 876-322-2184

tiane@cbjamaica.com

S-2466

Attorneys-at-Law

Brown, Findley & Co.
Per. Kalisia Findley

Architect

Lori McIntosh

Site Engineer

Charles Green

Contractor

Garco Construction

Quantity Surveyor

Markland Gordon

Coldwell Banker Jamaica Realty

Unit #3, 9-11 Barbican Road
Sovereign Commercial Centre, Kingston 6
www.cbjamaica.com

MLS#40953
DL-0564

LUXURY HOMES • RESORT & VILLA SALES • RESIDENTIAL & COMMERCIAL • PROPERTY SALES & LEASES

