

# THE AQUEDUCTS

NEGRIL | WESTMORELAND | JAMAICA

**RE/MAX** *Elite*

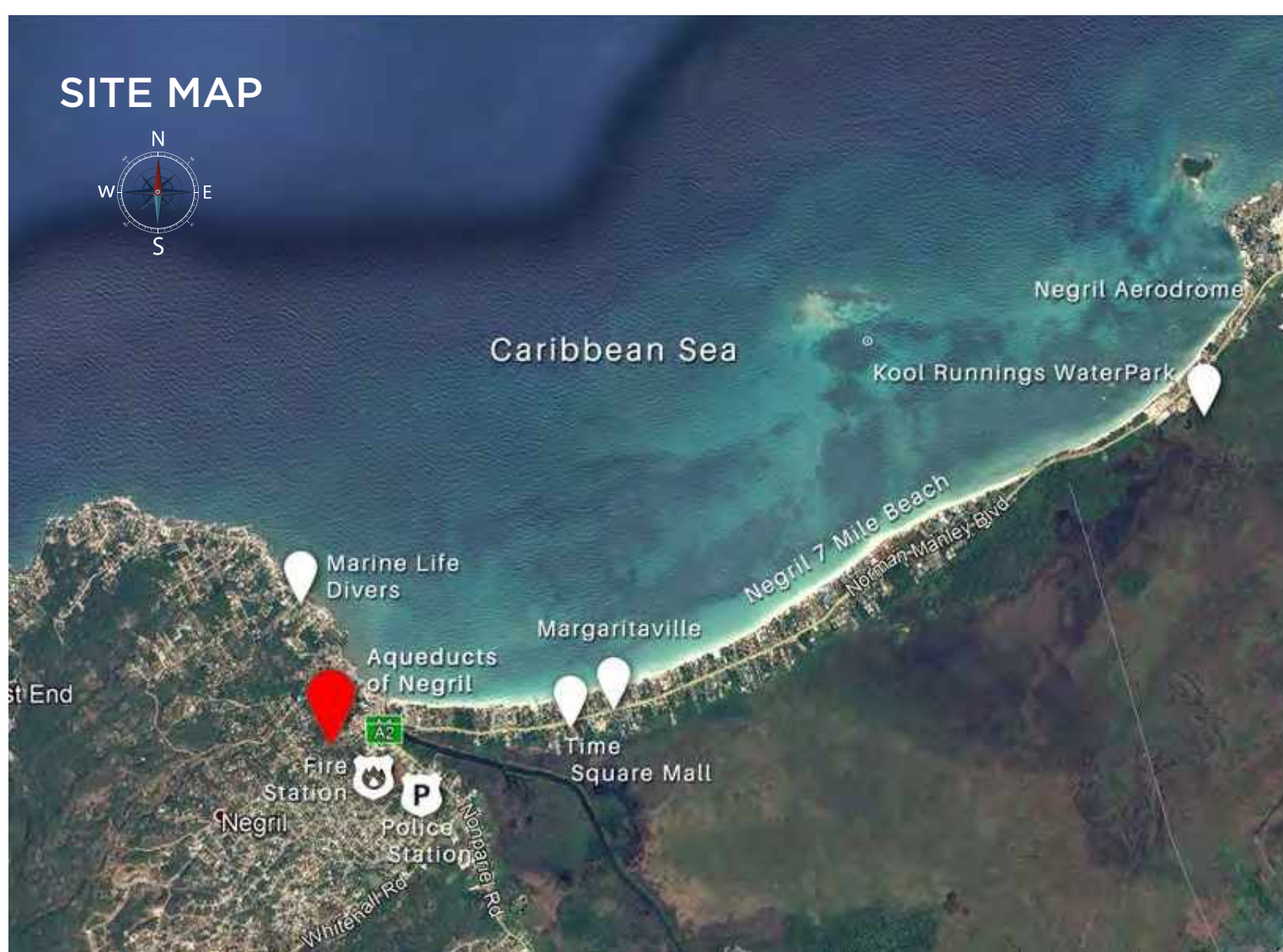
# THE AQUEDUCTS

NEGRIL | WESTMORELAND | JAMAICA

Fulfilling your desire for exquisite taste and ingenuity, The Aqueducts of Negril, with its 46 units are skillfully designed and established to display multi-floor plans, possessing top-notch functionality. All the single and double storey homes are fashioned with lavish terraces, showcasing a flawless view of beautifully sculpted greenery, overlooking the most divine ocean views you can imagine!

## LOCATION

Located in the heart of Negril, The Aqueducts is within close proximity of the best restaurants, banks, supermarkets, medical facilities, public transportation and the world renowned Seven Mile Beach and Rick's Café. Built on three acres of invigorating, beautifully landscaped hillside overlooking the town, The Aqueducts of Negril features a desirable combination of oceanic, hill and garden views to accommodate every buyer's dream.



# 46 UNITS | 3.6 ACRE SITE WITH OCEAN VIEWS | 80+ PARKING SPACES



## TOWNHOUSES

12 TWO BEDROOM TOWNHOUSES | 7 - THREE BEDROOM TOWNHOUSES

## APARTMENTS

16 - TWO BEDROOM APTS | 6- ONE BEDROOM APARTMENTS | 5 STUDIO APARTMENTS





## AMENITIES

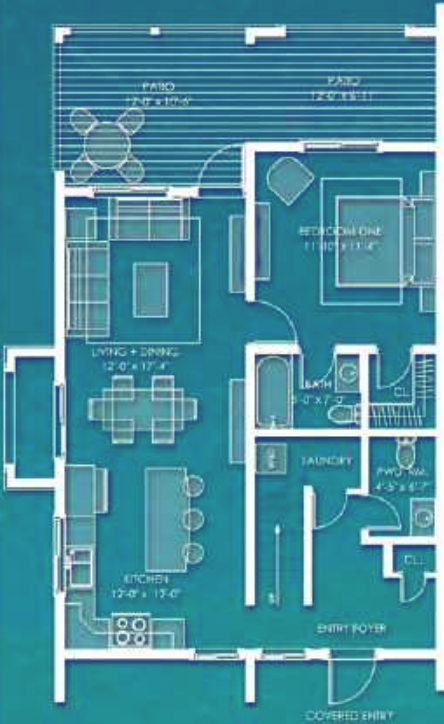
Swimming Pool  
Fitness Centre  
Guard House  
24 Hour Security  
81 Parking Spaces  
Manager's Office  
Guest Apartment  
External Solar Lighting  
Landscaped Gardens  
Water Tank (34,000 Gallons)  
Underground Electrical Wiring  
Trowel-on-Exterior Wall Finish  
Sure Coat Interior Finishes



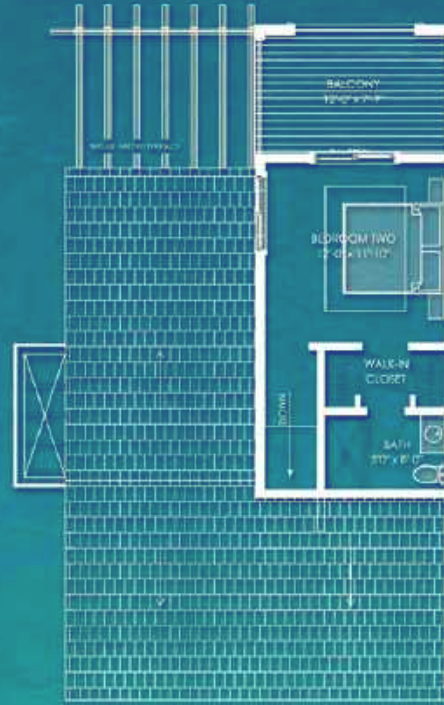


# TOWNHOUSES

2 Bedroom | 2.5 Bathrooms | 2 Storey

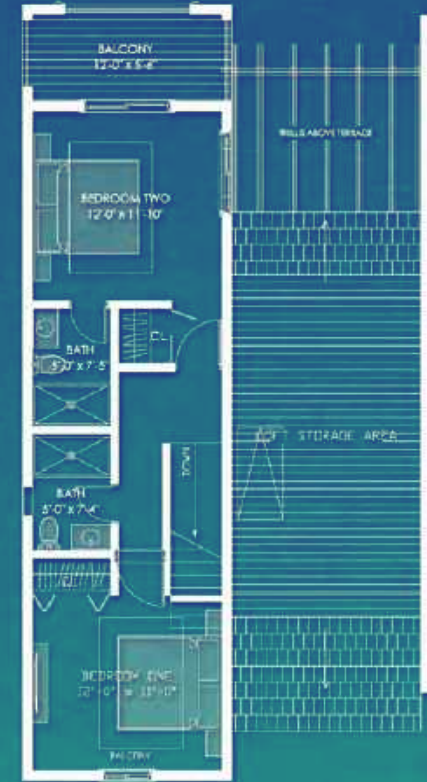


Ground Floor



Upper floor

2 Bedroom | 2.5 Bathrooms | 2 Storey



**TYPE 1 | 1350 SQ. FT.**

UNITS: A3, B6, C9, F24, G27

**STARTING AT: US\$340,000**

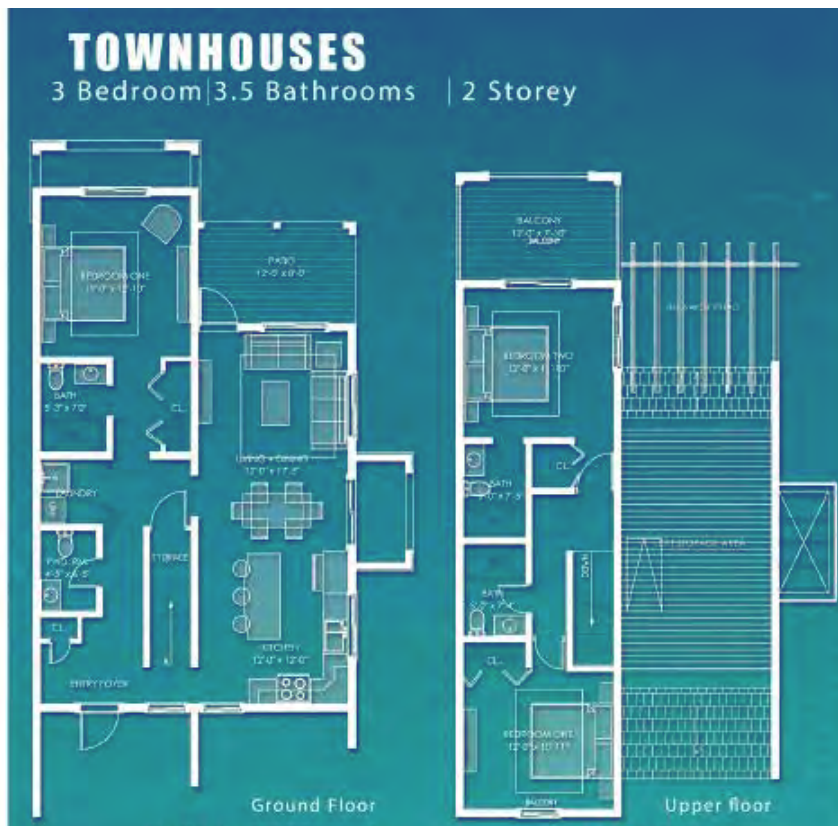
**TYPE 2 | 1500 SQ. FT.**

UNITS: A2, CB, F25, G28

**STARTING AT: US\$370,000**







**12 TWO BEDROOM TOWNHOUSES | 7 - THREE BEDROOM TOWNHOUSES**

**TYPE 3 | 1600 SQ. FT.**

UNITS: A1, B4, B5, C7, F22, F23, G26

STARTING AT: US\$395,000

**TYPE 4 | 1300 SQ. FT.**

UNITS: K44, K45, K46

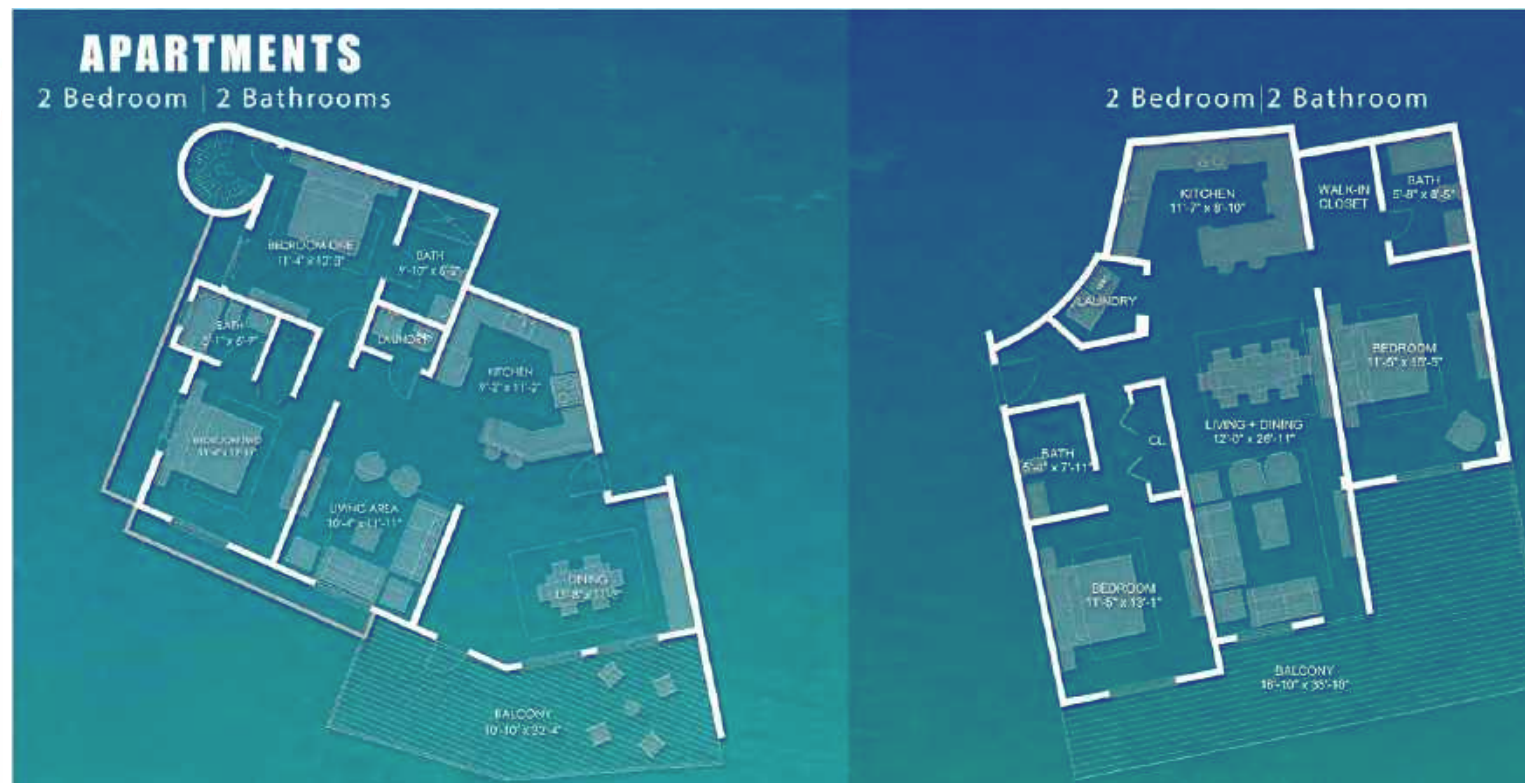
STARTING AT: US\$355,000





## FEATURES

- Loft storage (crawl space)
- In-Unit Laundry
- LED Recess lights
- Moen fixtures
- Instant water heaters
- Pre-wired for A/C units and fans
- Granite counter tops
- Reinforced concrete
- Impact resistance windows
- Porcelain tiles
- Insulated ceiling
- Composite decking (no fade or rot)
- Decramastic Stone coated roofing



**16 - TWO BEDROOM APTS | 6 - ONE BEDROOM APARTMENTS | 5 - STUDIO APARTMENTS**

**TYPE 4 | 1500 SQ. FT.**

UNITS: H29, H31

STARTING AT: US\$395,000

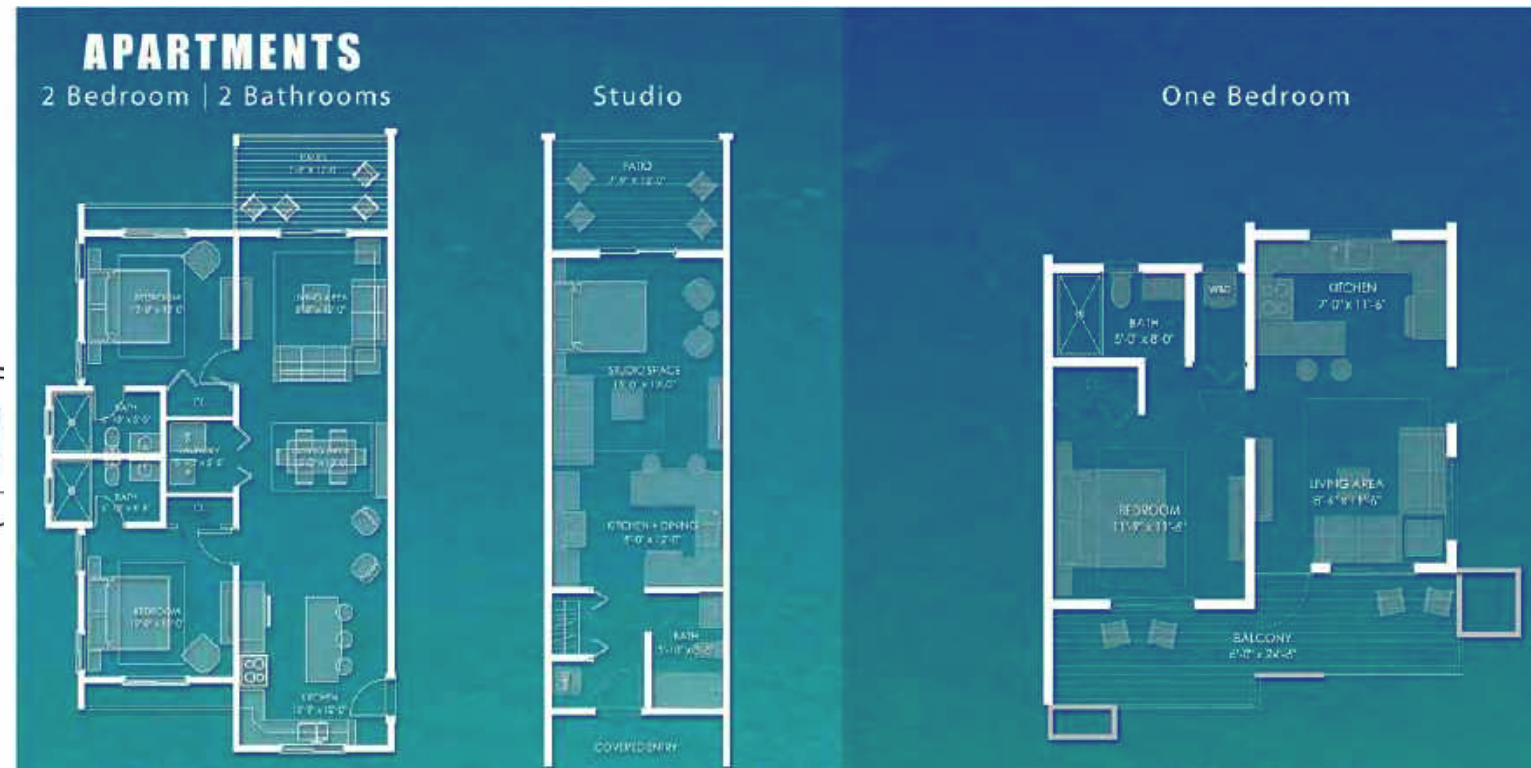
**TYPE 5 | 1450 SQ. FT.**

UNITS: H30

STARTING AT: US\$395,000







**16 - TWO BEDROOM APTS | 6- ONE BEDROOM APARTMENTS | 5 - STUDIO APARTMENTS**

**TYPE 1 | 1500 SQ. FT.**

UNITS: D10, D12, D13, D15, E16, E21, J39, J42

**STARTING AT: US\$395,000**

**TYPE 2 | 1500 SQ. FT.**

UNITS: D11, D14, E17, E20

**STARTING AT: US\$395,000**

**TYPE 3 | 600 SQ. FT.**

UNITS: I34, I35, I36, H32, H33

**STARTING AT: US\$395,000**





**16 - TWO BEDROOM APTS | 6- ONE BEDROOM APARTMENTS | 5 - STUDIO APARTMENTS**

**TYPE 6 | 400 SQ. FT.**

UNITS: J41

**STARTING AT: US\$120,000**

**TYPE 7 | 1500 SQ. FT.**

UNITS: J40, J43

**STARTING AT: US\$380,000**

**TYPE 8 | 1450 SQ. FT.**

UNITS: J38

**STARTING AT: US\$290,000**







# TEAM

## DEVELOPERS:

LHCC PERFECT HOMES LTD.

## DIRECTORS:

IAN KENT LEVY, OD, CD-CHAIRMAN

HON. HUGH C.E. HART, CJ

KIM CLARKE

REINALDO CASTRO

**ARCHITECTS:** APEC CONSULTANTS LTD.

**ENGINEERS:** APEC CONSULTANTS LTD.

**VISUALIZATION:** XKR CONSULTANTS

**REALTORS:** RE/MAX ELITE

**REALTOR:** ST. AUBYN CLARKE

